



## Applications

### Overview

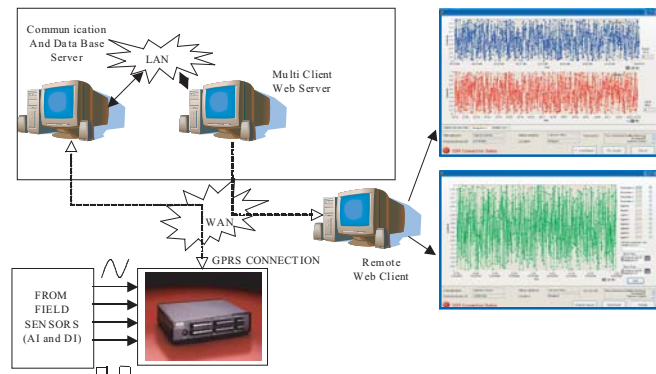
CAPture Remote is a Web-based, on-line, Remote Monitoring System, for transformers, electric motors, gearboxes, pumps, fans, rollers, turbines, conveyors, compressors and other mechanical and electro-mechanical equipment.

The heart of the system, the hardware component, is the Remote Data Acquisition System (RDAS) module; running a real-time operating system (RTOS), and placed near the unit to be monitored. The acquired data is then transferred directly to a central location through a commercially available GSM network, using the GPRS service. At the central location, the data is logged into a database, using the software component; for subsequent retrieval and analysis. The data is also published on the Web through a dedicated website, for authorized users across the globe.

CAPture Remote is one in a suite of CAPture products, from Captronic Systems; the products targeting automated test requirements, and control and acquisition requirements, across a diversity of industries.

### Verticals:

- Power & Utility (Generation, Transmission, & Distribution)
- Oil & Gas (Distribution)
- Aerospace & Defence
- Chemicals & Petrochemicals
- Other highly-automated process industries



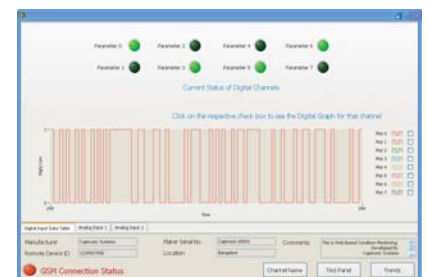
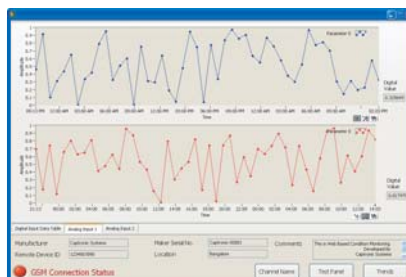
### Applications:

- Wireless Automation and Control
- Alarm & Notification Systems
- Remote Monitoring
- Data and Event Logging
- Machine Communication

## Benefits

The two models of CAPture Remote, W2320 and W2420, offer users tangible benefits, when compared to products from competition:

- CAPture Remote W2320 is a value-priced solution, allowing users to monitor even not-so-expensive, but critical, equipment.
- CAPture Remote W2420 is a high-performance solution, offering higher sampling rates, higher data transfer rates, and a larger on-board memory.
- Both models support analog inputs, in addition to digital inputs.
- Both models are truly remote solutions, in that they do not depend on the availability of a LAN or Wi-Fi network, for operation. They support an in-built GSM/GPRS module. They can also function in quasi-remote configurations (availability of a LAN).
- CAPture Remote W2420 offers a higher level of availability, with support for remote System Configuration, and support for a Redundant Power Supply (RPS) module.



## ••• Detailed Specifications

### Hardware:

Description	CAPture Remote W2320	CAPture Remote W2420
Analog Inputs	2 channels; $\pm 10$ V; 12-bit	4 channels; $\pm 60$ V, $\pm 15$ V, $\pm 4$ V, $\pm 1$ V, $\pm 125$ mV; 24-bit
Sampling Rate (Analog)	1 sample/sec	10 samples/sec
Digital Inputs	32-Channel, 24V	Optional: 8-Channel, 24V
GSM/GRPS	In-built	In-built
Data Transfer Rate	1 KB / minute	5 KB / minute
Onboard Memory	512 KB	Up to 2 GB
RS232 Ports	2 ports (5V TTL level)	1 port
Error Logging	Not Available	Available
Ethernet	Not Available	Integrated on controller with Web Server
Local Display	Not Available	Local PC
Remote Configuration	No	Yes
Power Supply	12V DC	9-30V DC with Redundant Power Supply (RPS) option
Dimensions	23.62 cm * 32.45 cm * 7.62 cm	28.7 cm * 40.32 cm * 18.16 cm
Operating Temperature	-20°C to +55°C	-30°C to +55°C
Humidity	5% to 95%, non-condensing	5% to 95%, non-condensing

### Software:

- Parameters (Temperature, Strain, Load, Position, Moisture, etc.) of equipment under test or being monitored
- View and change Log Points, Real-time settings, History Data, Alarm Settings
- View acquired data and status of system
- View history data:
  - From short-term database or long-term database (one at a time)
  - Between a particular time interval of interest
  - Graphically, tabular, alarm-specific
  - In plots, individually selecting/deselecting plots for viewing in the graph
- Export plotted data to an image (.jpg) or Excel (.xls) file.
- Print

### Company Information

Captronic Systems Pvt. Ltd. (Captronic Systems) specialises in the design and development of custom automated test, control and acquisition systems for R&D, design validation, and production testing. Since 1998 Captronic Systems has established a reputation as one of the leading System Integrators of National Instruments in India, with a wide range of customers from different industries including Aerospace, Ceramics, Manufacturing, R&D, Telecom, and Pharmaceutical. It is recognised as a Level 1 certified member of CSIA (Control System Integrators Association).

#### Other CAPture Products

- Fatigue Analysis System
- Machine Condition Monitoring System
- Frequency Response Analyzer
- Servo-controller for Hydraulic Actuators
- Sequence of Events Logger
- PCM Commutator/Decommutator

Disclaimers: • Other products and company names listed in this document are trademarks or trade names of their respective companies. • Captronic Systems pursues a policy of continuous development and product improvement. The specifications in this document may therefore be changed without notice.

#### Contact Detail:

P.O.Box -1017 - Dammam - 31431 - Saudi Arabia | Tel No. 0138822299 |

Fax No. 0138827027

Email: nasico@alnajim.com